



SEA OIL  
PUBLIC COMPANY LIMITED

SEA OIL PUBLIC COMPANY LIMITED

REGISTERED CAPITAL

608.92 Million Baht



## NATURE OF BUSINESS



### Petroleum & Petrochemical Business



Trading Marine oil and lubricant; offshore and onshore



Production and distribution of Solvent



Production and Exploration through JV "Pan Orient Energy Siam Limited" (POES)



### Supply Management Business



Catering and Services for offshore accommodation barge and offshore and onshore rigs



General Supply for vessel and offshore rigs

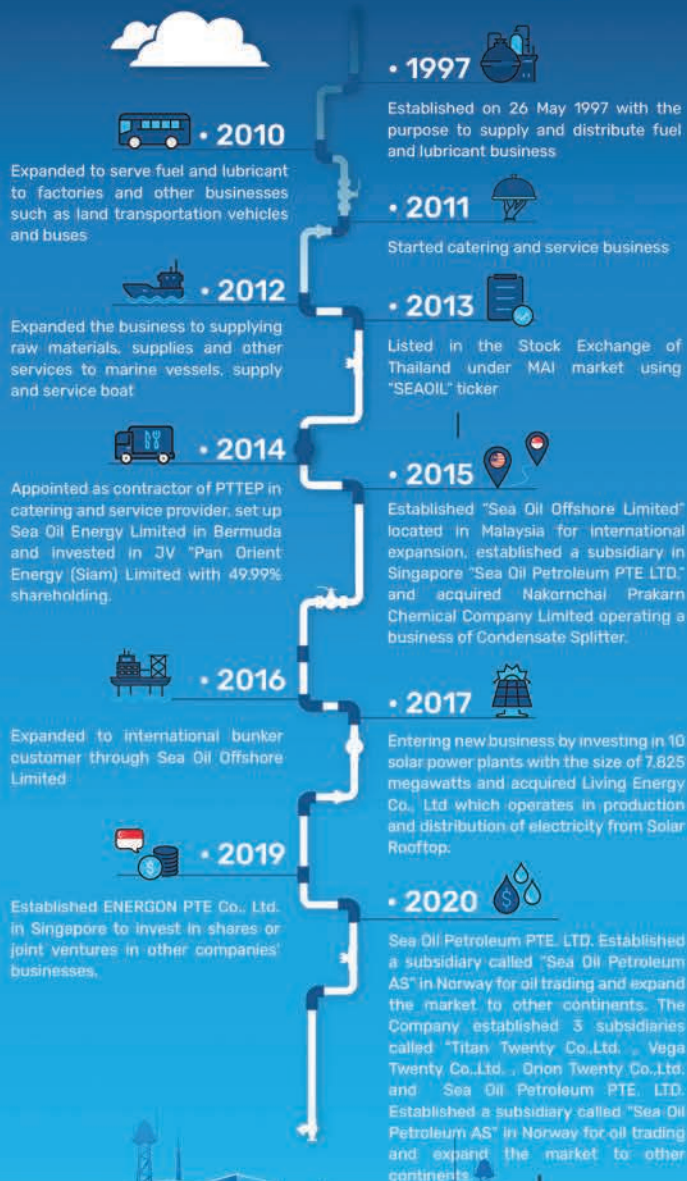


### Renewable Energy Business



Production and distribution of electricity generated from Solar power

## COMPANY MILESTONE



SEA OIL  
PUBLIC COMPANY LIMITED

# SEA OIL

## Factsheet FY2020



## PETROLEUM & PETROCHEMICAL BUSINESS

Revenue from Oil Trading

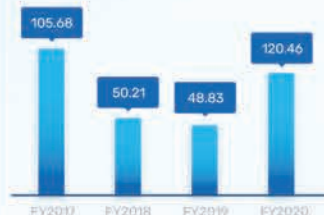
(Unit: THB mn)



## SUPPLY MANAGEMENT BUSINESS

Revenue from Service and Supply Management

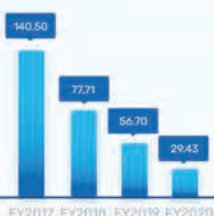
(Unit: THB mn)



## RENEWABLE ENERGY

Revenue from Renewable Energy Business

(Unit: THB mn)



## CONDENSATE SPLITTER

Revenue from Production and distribution of Solvent

(Unit: THB mn)



## OTHER INCOME

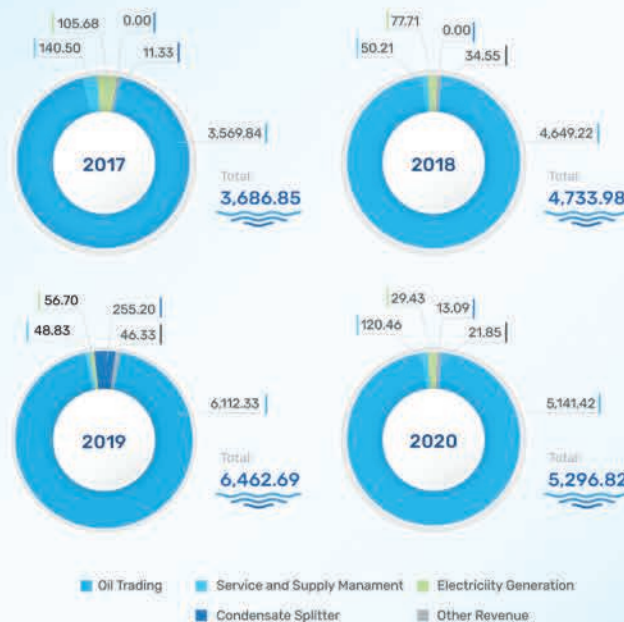
(Unit: THB mn)



## FINANCIAL HIGHLIGHTS

Revenue Breakdown by Business

(Unit: THB mn)



## STOCK INFORMATION

As of 31 December 2020

SET: SEAOL

Last Price :  
2.42 THB

52-week High/Low:  
4.08/1.62 THB

Market Cap:  
1,473.57 MB.

Free Float:  
39.30 THB  
(as of 17 Mar 2020)

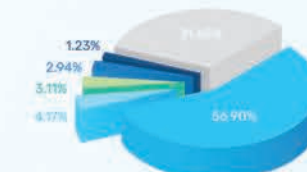
P/E Ratio:  
30.32



## MAJOR SHAREHOLDERS

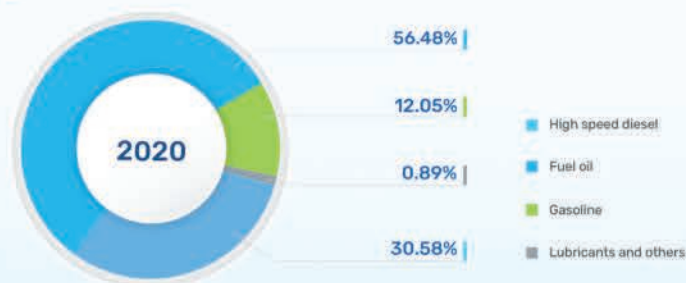
As of 31 December 2020

- Panboonhom Group
- Mr. Seksan Setthasakorn
- Mr. Apisit Rujikeatkarnjorn
- Mr. Thada Olaric
- Mr. Nopporn Luangtana-anan
- Others



## OIL TRADING | Breakdown of revenue by product

As of 2020



## GROSS PROFIT

(Unit: THB mn)



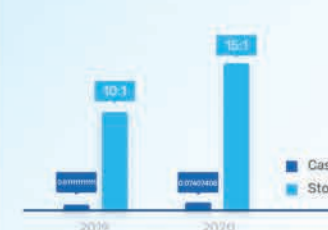
## NET PROFIT

(Unit: THB mn)



## DIVIDEND PAYMENT

THB per Share



	2016	2017	2018	2019	2020
Type	Cash	No Dividend	No Dividend	Cash	Stock
DPS	0.05	-	-	0.011111111111	10.1
EPS	-0.20	-	0.11	0.03	0.03

**Dividend Policy:** The Company has a policy to pay dividend at not less than 30% of net profit after corporate income tax and all reserves required by law

## EXPLORATION AND PRODUCTION

Joint Venture

40.69MB



## SERVICE AND SUPPLY MANAGEMENT

120.46MB



## FINANCIAL POSITION

(Unit: THB mn)



## FINANCIAL RATIOS

(Unit: %)



**Disclaimer:** Lorem ipsum dolor sit amet, consectetur adipiscing elit, sed diam nonummy nibh euismod tincidunt ut laoreet dolore magna aliquam erat volutpat. Ut wisi enim ad minim veniam, quis nostrud exerci tation ullamcorper suscipit lobortis nisl ut aliquip ex ea commodo consequat. Duis autem vel eum iriure dolor in hendrerit in vulputate velit esse molestie consequat, vel illum dolore eu feugiat nulla facilisis at vero eros et accumsan et justo odio dignissim qui blandit praesent luptatum zzril delenit augue duis dolore te feugait nulla facilisi. Lorem ipsum dolor sit amet, consectetur adipiscing elit, sed diam nonummy nibh euismod tincidunt ut laoreet dolore magna aliquam erat volutpat. Ut wisi enim ad minim veniam, quis nostrud exerci tation ullamcorper suscipit lobortis nisl ut aliquip ex ea commodo consequat. Lorem ipsum dolor sit amet, consectetur adipiscing elit, sed diam nonummy nibh euismod tincidunt ut laoreet dolore magna aliquam erat volutpat. Ut wisi enim ad minim veniam, quis nostrud exerci tation ullamcorper suscipit lobortis nisl ut aliquip ex ea commodo consequat. Duis autem vel eum iriure dolor in feugiat nulla facilisis at vero eros et accumsan et justo odio dignissim qui blandit.